



PCORE
ELECTRIC

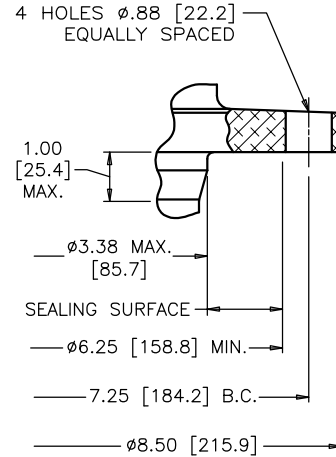
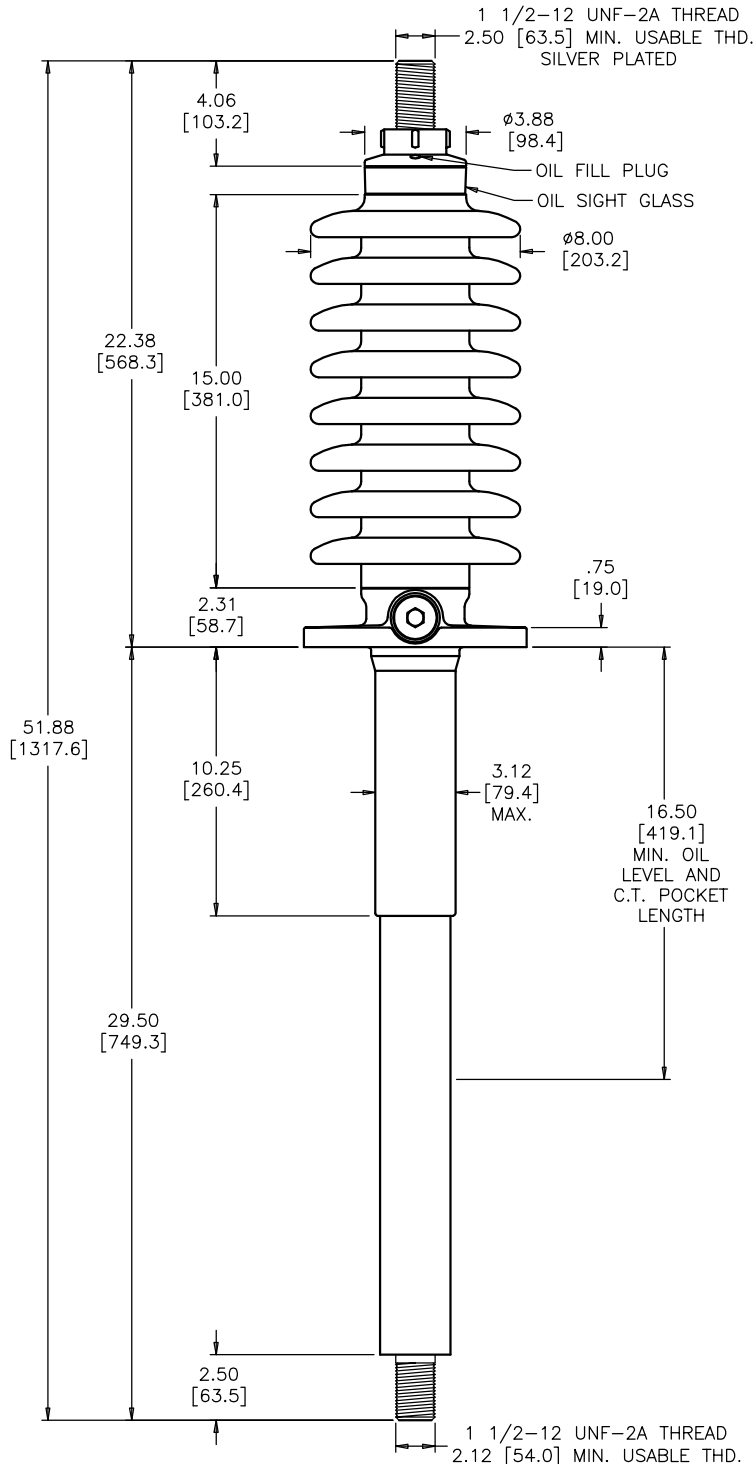
POWER SYSTEMS

KV CLASS 34.5 kV	BIL 200 kV	Uy 22 kV
CURRENT RATING		
1200 AMP BOTTOM CONNECTION		
MIN. CREEP 41.00 [1041.4]	MIN. STRIKE 17.00 [431.8]	
CREEP/Uy 1.86 [47.3]	STD. IEEE C57.19.00/01	
PCB CONTENT OF OIL IS LESS THAN 1 ppm		

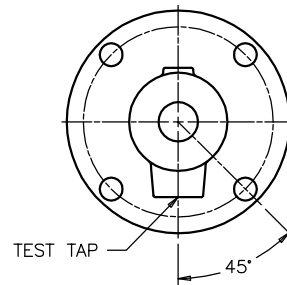
DWG.	CATALOG NUMBER	GLAZE COLOR
SD	B-89311	BROWN
SD	B-89311-70	LT. GRAY

DATE 7-20-94	REV. DATE 9-18-08
MAXIMUM ALTITUDE 10000 ft [3000 m]	
NET WEIGHT 74 lb [34 kg]	
ANGLE OF INCLINATION FROM THE VERTICAL 0° TO 70°	

TITLE
PRC BUSHING



MOUNTING FLANGE DETAIL



FLANGE ALIGNMENT DIAGRAM TOP VIEW

DIMENSIONS IN INCHES [MILLIMETERS]

REVISION REMOVED 55°C, TEMPERATURE GOVERNED BY IEEE STANDARD

SCALE 1/5

NOTE TO PURCHASER:
ALL SALES OF PCORE PRODUCTS ARE SUBJECT TO OUR STANDARD TERMS AND CONDITIONS AND THE LIMITED WARRANTIES THEREUNDER